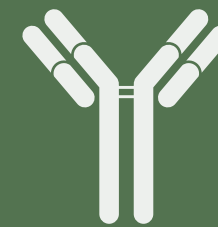


EpiGentek Antibody Catalog

抗體型錄



威健股份有限公司 Welgene Biotech

TEL : 02-6616-0001 (北) 07-5500-866 (南)

FAX : 02-6616-8766

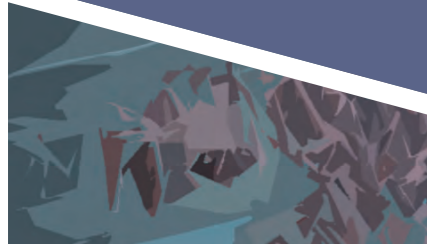
FREE : 0809-072666

WEB : <http://www.welgene.com.tw>

WELGENE BIOTECH



DNA 甲基化 (DNA methylation) 是表觀遺傳學研究中最廣為人知的基因表現調控修飾機制。也是影響細胞功能的重要因素。不正常的 DNA 甲基化作用常會導致多種疾病或者癌症的發生。透過 DNA 甲基化相關抗體的使用能深入研究 DNA 甲基調控與各種疾病、細胞循環與胚胎發育的關聯性。



用於辨識染色質 (chromatin) 及轉錄相關蛋白質如 histone deacetylases (HDACs)、histone acetyltransferases (HATs)、histone methyltransferases (HMTs) 及 HP1 等的抗體。是了解表觀遺傳調控、染色質變化及結構功能的重要工具。進一步也能研究細胞的分化、複製及基因表現等。

DNA Methylation Antibodies

A-1001	DNMT1 Monoclonal Antibody [60B122.1] WB, IF, ELISA, IP
A-1003	DNMT3A Polyclonal Antibody WB, IHC, IF
A-1004	DNMT3B Polyclonal Antibody WB, IF, ELISA, IP, ChIP
A-1006	MBD1 Polyclonal Antibody WB, IF, ELISA, IP
A-1014	5-Methylcytosine (5-mC) Monoclonal Antibody [33D3] DB, IHC, IF, ELISA, MeDIP, IP
A-1018	5-Hydroxymethylcytosine (5-hmC) Monoclonal Antibody [HMC/4D9] IF, IHC, ELISA, DB, MeDIP
A-1300	5-Hydroxymethyluridine Polyclonal Antibody ELISA

A-1101	DNMT2 Monoclonal Antibody [1E12] WB, ELISA, IF
A-1800	DNMT3L Monoclonal Antibody [B0-5] IHC, ICC
A-1109	GATAD2A Monoclonal Antibody [3F3] WB, ELISA
A-1103	MBD1 Monoclonal Antibody [2C7] WB, ELISA, IHC
A-1301	Mouse Anti Human Uracil-DNA Glycosylase Antibody ELISA, WB
A-1020	TET1 Polyclonal Antibody WB, IP

Chromatin & Transcription Antibodies

A-4132	ARID1A Monoclonal Antibody [3H14] WB, ELISA
A-2130	ARID1B Monoclonal Antibody [2D2] WB, ELISA, IHC, IF
A-2208	ARID3A Monoclonal Antibody [1A11] WB, ELISA, IHC, IF
A-2219	ARNT Monoclonal Antibody [3D10] WB, ELISA, IHC, IF
A-2738	ATF2 Polyclonal Antibody WB, IHC, IF
A-2739	BMI1 Polyclonal Antibody WB, IHC, IF, IP
A-2111	CBX1 Monoclonal Antibody [4E12] WB, ELISA
A-2189	CREB1 Monoclonal Antibody [3F1-1B2] WB, ELISA, IHC, IF
A-2200	CTBP1 Monoclonal Antibody [2G7] WB, ELISA, IHC, IF
A-2705	CTBP1 Polyclonal Antibody WB, IHC, IF, IP, ChIP
A-2740	CTBP2 Polyclonal Antibody WB, IP
A-2210	EGR1 Monoclonal Antibody [6E8] WB, ELISA, IHC, IF
A-2197	FOS Monoclonal Antibody [2D11] WB, ELISA
A-2223	FOXA1 Monoclonal Antibody [2D7] WB, ELISA, IHC
A-2214	GATA1 Monoclonal Antibody [3G6] WB, ELISA
A-2215	GATA2 Monoclonal Antibody [2D11] WB, ELISA, IF
A-2270	KRAS Monoclonal Antibody [3B10-2F2] WB, ELISA, IF
A-2800	L1ORF1p Polyclonal Antibody WB, ICC
A-2271	MDM2 Monoclonal Antibody [1A7] WB, ELISA, IHC
A-2198	MYC Monoclonal Antibody [1G7] WB, ELISA, IHC
A-2240	PAX2 Monoclonal Antibody [3C7] WB, ELISA, IHC

A-2243	PAX7 Monoclonal Antibody [3C9] WB, ELISA
A-2721	PCGF6 Polyclonal Antibody WB, IF
A-2743	PHF6 Polyclonal Antibody WB, IHC
A-2017	PRDM17 Polyclonal Antibody ELISA
A-2032	RNA Polymerase II Monoclonal Antibody [CTD4H8] WB, ELISA, IP
A-2180	RUNX1 Monoclonal Antibody [2C10] WB, ELISA, IHC, IF
A-2250	SP1 Monoclonal Antibody [4H6] WB, ELISA, IHC, IF
A-2253	STAT1 Monoclonal Antibody [1A8] WB, ELISA, IF
A-2263	VDR Monoclonal Antibody [2F4] ELISA, IHC
A-2019	EZH2 Polyclonal Antibody WB, IHC, IF
A-2155	HMGB1 Monoclonal Antibody [1D5] WB, ELISA, IHC, IF
A-2176	PTBP2 Monoclonal Antibody [2D10-B2] WB, ELISA
A-2195	ATF4 Monoclonal Antibody [2B3] WB, ELISA, IF
A-2220	TFF1 Monoclonal Antibody [3H5] WB, ELISA
A-2228A	IRF5 Monoclonal Antibody [1H6] WB, IP, ELISA, IHC, IF
A-2229	MEIS2 Monoclonal Antibody [1H4] WB, ELISA, IHC, IF
A-2233	POU2F1 Monoclonal Antibody [1E12] WB, ELISA
A-2237	POU3F2 Monoclonal Antibody [6F6] WB, ELISA
A-2244	PBX1 Monoclonal Antibody [4A2] WB, ELISA, IHC, IF
A-2261	GTF2H1 Monoclonal Antibody [1F12-1B5] WB, ELISA, IHC, IF
A-2262	USF1 Monoclonal Antibody [3F6] WB, ELISA

Applications:
AFC = Affinity Chromatography; DB = Dot Blot; EMSA = Electrophoretic Mobility Shift Assays; FA = Functional Application;
FC = Flow Cytometry; GS = Gel Shift; ICC = Immunocytochemistry; IEM = Immuno-Electron Microscopy; IF = Immunofluorescence;
IH = Immunohistology; IHC = Immunohistochemistry; IP = Immunoprecipitation; MeDIP = Methylated DNA Immunoprecipitation;
WB = Western Blot; v = ChIP-Grade Certified

Histone Methylation Antibodies

A-3001	PRMT1 Polyclonal Antibody WB, IF
A-3715	Histone H3R8 Monomethyl (H3R8me1) Polyclonal Antibody WB, IHC, IF, ChIP, ChIP-Seq
A-3719	Histone H3R26 Monomethyl (H3R26me1) Polyclonal Antibody WB, IHC, IF, IP
A-3002	PRMT2 Polyclonal Antibody WB, IHC, ELISA
A-3732	PRMT8 Polyclonal Antibody WB, IHC
A-3114	AOF2 Monoclonal Antibody [2E7] WB, ELISA, IHC
A-3727	ASH2L Polyclonal Antibody WB, IHC, IF
A-3108	ASH2L Monoclonal Antibody [4G7] WB, ELISA
A-2028	BAF170 Monoclonal Antibody WB, IF, ELISA, IP
A-3015	CBX1 Polyclonal Antibody WB, ELISA, IHC
A-3110	EED Monoclonal Antibody [3B12] WB, ELISA
A-2167	FBXL10 Monoclonal Antibody [5G1] WB, ELISA, IF
A-3019	G9a Polyclonal Antibody WB, ELISA
A-4124	HIST1H3D Monoclonal Antibody [1D8] WB, ELISA, IHC, IF
A-3115	JMJD1C Monoclonal Antibody [3A8] WB, ELISA
A-3116	JMJD5 Monoclonal Antibody [1F3] ELISA
A-3728	KDM1A Polyclonal Antibody WB, IHC, IF, IP, ChIP
A-3018	LSD1 Antibody WB, ELISA
A-3729	MBD5 Polyclonal Antibody WB
A-3105	PRDM1 Monoclonal Antibody [2B10] WB, ELISA
A-2012	PRDM12 Polyclonal Antibody ELISA
A-2004	PRDM4 Polyclonal Antibody ELISA

A-3720	SETD2 Polyclonal Antibody WB, IHC, IF, IP, ChIP
A-3730	SMYD2 Polyclonal Antibody WB, IHC, IF
A-4037	Histone H3K27me1 (H3K27 Monomethyl) Polyclonal Antibody WB, IF, IHC, IP, ChIP, ChIP-Seq
A-4040	Histone H3K36me1 (H3K36 Monomethyl) Polyclonal Antibody WB, IF, IHC, IP, ChIP, ChIP-Seq
A-4041	Histone H3K36me2 (H3K36 Dimethyl) Polyclonal Antibody WB, IF, IHC, IP, ChIP, ChIP-Seq
A-4033	Histone H3K4me3 (H3K4 Trimethyl) Polyclonal Antibody WB, IF, IHC, IP, ChIP, ChIP-Seq
A-4044	Histone H3K79me2 (H3K79 Dimethyl) Polyclonal Antibody WB, IF, IHC, IP, ChIP, ChIP-Seq
A-4036	Histone H3K9me3 (H3K9 Trimethyl) Polyclonal Antibody WB, IF, IHC, IP, ChIP, ChIP-Seq
A-4048	Histone H4K20me3 (H4K20 Trimethyl) Polyclonal Antibody WB, IF, IHC, ELISA, IP, ChIP, ChIP-Seq
A-4035	Histone H3K9me2 (H3K9 Dimethyl) Polyclonal Antibody WB, IF, IHC, ELISA, IP, ChIP, ChIP-Seq
A-4038	Histone H3K27me2 (H3K27 Dimethyl) Polyclonal Antibody WB, IF, IHC, IP, ChIP, ChIP-Seq
A-4039	Histone H3K27me3 (H3K27 Trimethyl) Polyclonal Antibody WB, IF, IHC, IP, ChIP, ChIP-Seq
A-4042	Histone H3K36me3 (H3K36 Trimethyl) Polyclonal Antibody WB, IF, IHC, IP, ChIP, ChIP-Seq

DNA Damage & Repair Antibodies

A-6300	8-Hydroxyguanosine (8-OHG) Polyclonal Antibody ELISA, IH
A-6195	ABC1 Monoclonal Antibody [1F11] WB, ELISA
A-6701	ATF2 Polyclonal Antibody WB, IHC, ICC, IP
A-6116	ATR Monoclonal Antibody [3F2] WB, ELISA, IF
A-6214	BCL2L1 Monoclonal Antibody [3E2-2A5] WB, ELISA, IF
A-6120	BRCA2 Monoclonal Antibody [3D12] WB, ELISA
A-6404	Cu/Zn SOD Polyclonal Antibody IF, IHC, IP, WB
A-6123	CHEK2 Monoclonal Antibody [4B7] WB, ELISA, IHC, IF
A-6416	Cu ²⁺ /Zn ²⁺ superoxide dismutase Polyclonal Antibody ELISA
A-6127	DDB1 Monoclonal Antibody [4C5] WB, ELISA, IHC
A-6104	ERCC1 Monoclonal Antibody [3A7] WB, ELISA
A-6174	FANCG Monoclonal Antibody [2C8] WB, ELISA, IF
A-6109	GADD45A Monoclonal Antibody [3D12] WB, ELISA
A-6153	GADD45G Monoclonal Antibody [1D3] WB, ELISA

A-6166	HIPK2 Monoclonal Antibody [4F4] WB, ELISA
A-6175	MLH1 Monoclonal Antibody [M1] WB, ELISA, IHC, IF
A-6408	Mn SOD Polyclonal Antibody EIA, FC, IHC, IP, WB
A-6110	MPG Monoclonal Antibody [1E10] WB, ELISA, IHC, IF
A-6177	MSH5 Monoclonal Antibody [1C11] WB, ELISA
A-6702	MSH6 Polyclonal Antibody WB, IHC, IF
A-6179	MUTYH Monoclonal Antibody [4D10] WB, ELISA
A-6196	NME1 Monoclonal Antibody [1D7] WB, ELISA, IHC, IF, IP
A-6130	PARP1 Monoclonal Antibody [3G4] WB, ELISA, IF
A-6409	PARP1 Polyclonal Antibody ELISA, ICC, IHC, IP, WB
A-6135	RAD18 Monoclonal Antibody [3H7] WB, ELISA, IHC, IF
A-6704	TDG Polyclonal Antibody WB, IP
A-6190	XRCC2 Monoclonal Antibody [2H4] WB, ELISA
A-6194	XRCC5 Monoclonal Antibody [3D8] WB, ELISA, IHC
A-6161	ZNF143 Monoclonal Antibody [2B4] WB, ELISA, IHC, IF

轉錄作用的表現與抑制和組蛋白甲基化修飾 (Histone methylation) 與否有高度相關性。組蛋白甲基化常發生於 lysine 及 arginine 的位置並影響著染色質的結構緊密程度。甲基化修飾的過程藉由 HMT (Histone methyltransferase) 和 HDM (histone demethylases) 兩種酵素來進行。這些酵素的活性直接影響到轉錄作用的開與關。目前研究已知 H3K4、H3K48 及 H3K79 和基因 activate 有關。H3K9 及 H3K27 和基因 inactivate 相關。

利用 DNA 損傷與修復抗體可以研究多種在 DNA 修復過程中高度相關及參與的蛋白。由於過多的 DNA 損害累積可能會導致基因轉錄的錯誤甚或腫瘤細胞的形成。所以研究人員可以透過這些抗體來進一步研究疾病與 DNA 損傷的關聯性。



組蛋白上的乙醯基化作用 (Histone acetylation) 即是在 lysine 的 N端位點上加上額外的乙醯官能基 (acetyl functional group)。許多研究數據皆顯示組蛋白乙醯基作用高度相關於基因的調控機制。也因此 HAT (histone acetyltransferase) 和 HDAC (histone deacetylase) 的活性強弱會影響染色質的基因轉錄作用。



目標蛋白磷酸化的抗體可以幫助研究者進一步了解磷酸作用在細胞反應中所扮演的角色。蛋白藉由磷酸基 (phosphate group) 的加入可以做為開關酵素的關鍵。進而影響許多的反應與功能性。

Histone Acetylation Antibodies

A-4001	HDAC1 Monoclonal Antibody WB, IF, ELISA, IP	A-4029	Histone H4K12ac (Acetyl H4K12) Polyclonal Antibody WB, IF, IHC, ELISA, IP
A-4109	HDAC11 Monoclonal Antibody [1C2-2G5] WB, ELISA, IF	A-4030	Histone H4K16ac (Acetyl H4K16) Polyclonal Antibody WB, IF, IHC, ELISA, IP
A-4002	HDAC2 Monoclonal Antibody WB, IF, ELISA, IP	A-4027	Histone H4K5ac (Acetyl H4K5) Polyclonal Antibody WB, IF, IHC, ELISA, IP, ChIP, ChIP-Seq
A-4003	HDAC3 Monoclonal Antibody WB, IF, ELISA, IP	A-4118	ARD1 Monoclonal Antibody [4B7-H4] WB, ELISA, IF
A-4004	HDAC4 Polyclonal Antibody WB, IF, ELISA, IP	A-2168	BRD8 Monoclonal Antibody [3G8] ELISA
A-4005	HDAC5 Polyclonal Antibody WB, IF, ELISA, IP	A-2116	CHD1 Monoclonal Antibody [1G2] WB, ELISA
A-4006	HDAC6 Polyclonal Antibody WB, ELISA, IF, IP, ChIP	A-4013	GCN5 Polyclonal Antibody WB, IF, ELISA, IP
A-4107	HDAC8 Monoclonal Antibody [2F4] WB, ELISA, IF	A-4014	HAT1 Polyclonal Antibody WB, IHC, IF, IP, ChIP
A-4008	HDAC8 Monoclonal Antibody WB, ELISA, IF, IP	A-4707	KAT8 Polyclonal Antibody WB, IP
A-4023	Histone H3K14ac (Acetyl H3K14) Polyclonal Antibody WB, IF, IHC, IP, ChIP, ChIP-Seq	A-4020	p300 Polyclonal Antibody WB, ELISA, IF, IP
A-4024	Histone H3K18ac (Acetyl H3K18) Polyclonal Antibody WB, IF, IHC, IP, ChIP, ChIP-Seq	A-4012	PCAF Polyclonal Antibody WB, ELISA, IF, IP
A-4026	Histone H3K56ac (Acetyl H3K56) Polyclonal Antibody WB, ELISA, IP, ChIP, ChIP-Seq	A-4706	SAT1 Polyclonal Antibody WB, IHC
A-4021	Histone H3K9/14ac (Acetyl H3K9/14) Polyclonal Antibody WB, IF, IH, ELISA, IP, ChIP, ChIP-Seq	A-4110	SIRT1 Monoclonal Antibody [7B7] WB, ELISA, IHC, IF
A-4022	Histone H3K9ac (Acetyl H3K9) Polyclonal Antibody WB, IHC, ELISA, IP, ChIP, ChIP-Seq	A-4702	SIRT2 Polyclonal Antibody WB, IHC, IF
A-4054	Histone H3K9ac (Acetyl H3K9) Polyclonal Antibody [4E9B11] WB, IHC, ELISA	A-4112	SIRT3 Monoclonal Antibody [1A4] WB, ELISA
		A-4704	SIRT5 Polyclonal Antibody WB, IP
		A-4705	SIRT6 Polyclonal Antibody WB, IHC

Phosphorylation Antibodies

A-7175	AKAP12 Monoclonal Antibody [1C5] WB, ELISA	A-4051	Phospho-Histone H3 (Thr3) Polyclonal Antibody WB, ELISA, IHC, IP
A-7105	AKT1 Monoclonal Antibody [4C3] WB, ELISA	A-7173	RASGRP2 Monoclonal Antibody [3D8] WB, ELISA
A-7132	AXL Monoclonal Antibody [6C8] WB, ELISA	A-7425	STAT1 (pSer727) Polyclonal Antibody WB
A-7152	CDK3 Monoclonal Antibody [3C12] WB, ELISA, IHC	A-7126	VEGF Monoclonal Antibody [3F7] WB, ELISA
A-7154	CDK6 Monoclonal Antibody [8H4] WB, ELISA, IHC, IF		
A-7131	EFNA5 Monoclonal Antibody [1F12] WB, ELISA		
A-7406	Erk1/2 Polyclonal Antibody FC, IHC, IP, WB		
A-7440	Eukaryotic Initiation factor 2 alpha (pSer52) Polyclonal Antibody WB		
A-7701	H2AX Polyclonal Antibody WB, IHC, ICC		
A-7441	I kappa B alpha (pSer32/36) Polyclonal Antibody WB		
A-0419	Insulin receptor B Monoclonal Antibody [C18C4] WB		
A-7435	JNK1/2 (pThr183/pTyr185) Polyclonal Antibody IHC, WB		
A-7155	MAP2K3 Monoclonal Antibody [1D10] WB, ELISA, IHC		
A-7156	MAP2K5 Monoclonal Antibody [M1-E6] WB, ELISA, IF		
A-7413	nNOS (pSer1417) Polyclonal Antibody WB		
A-7421	PDK1 Polyclonal Antibody IHC, WB		
A-4049	Phospho-Histone H3 (Ser10)		

Ubiquitination & SUMOylation Antibodies

A-8505	19S Proteasome (ADRM1) Polyclonal Antibody WB	A-8403	SUMO-2 Polyclonal Antibody ICC, IP, WB
A-8142	ADPGK Monoclonal Antibody [1E4] WB, ELISA	A-8143	SUMO3 Monoclonal Antibody [4G11] WB, ELISA
A-8141	ADPRH Monoclonal Antibody [1F11] WB, ELISA, IHC	A-8110	TRIM37 Monoclonal Antibody [2D11] WB, ELISA
A-8135	CAND1 Monoclonal Antibody [5D7] WB, ELISA, IHC, IF	A-8504	Ub+1 Polyclonal Antibody IHC, WB
A-8443	COP9 signalosome Csn2 subunit Polyclonal Antibody IHC, IP, WB	A-8700	UBE2C Polyclonal Antibody WB, IHC, IF
A-8455	COP9 signalosome Csn7 subunit Polyclonal Antibody IP, WB	A-8702	UBE2I Polyclonal Antibody WB, IHC, ICC, IF, IP, RIP
A-8453	COP9 signalosome Csn8 subunit Polyclonal Antibody IHC, IP, WB	A-8115	UBE3A Monoclonal Antibody [2F6] WB, ELISA, IHC, IF
A-8138	DTX3L Monoclonal Antibody [1D10] WB, ELISA, IHC	A-8462	Ubiquitin activating enzyme (CT) Polyclonal Antibody WB
A-8124	FBXO22 Monoclonal Antibody [6G9] WB, ELISA	A-8406	Ubiquitin Monoclonal Antibody [EX9] WB
A-8105	IBRDC1 Monoclonal Antibody [4B1] WB, ELISA, IF	A-8413	Ubiquitin Monoclonal Antibody [EX9], HRP Conjugated WB
A-8466	Mono- and polyubiquitinated conjugates Monoclonal Antibody [FK2] IHC, IP, WB	A-8136	USP34 Monoclonal Antibody [2E2] WB, ELISA, IHC, IF
A-8151	PIAS3 Monoclonal Antibody [4F12] WB, ELISA	A-8111	UBE2C Monoclonal Antibody [9D3] WB, ELISA, IHC, IF
A-8409	Polyubiquitin Monoclonal Antibody [HWA4C4], HRP Conjugated WB	A-8114	UBE2M Monoclonal Antibody [3C4] WB, ELISA, IF
A-8480	Proteasome 19S ATPase subunit Rpt6 Monoclonal Antibody [P45110] IHC, IP, WB	A-8131	SMURF1 Monoclonal Antibody [1D7] WB, ELISA, IHC, IF
A-8461	Proteasome 19S Polyclonal Antibody IHC, WB		
A-8429	Proteasome 20S alpha4 subunit Monoclonal Antibody [MCP34] IHC, IP, WB		
A-8436	Proteasome 20S core subunits Polyclonal Antibody IHC, IP, WB		
A-8147	SEN6 Monoclonal Antibody [4B7] WB, ELISA, IHC		
A-8402	SUMO-1 Polyclonal Antibody ICC, IP, WB		
A-8144	SUMO2 Monoclonal Antibody [2C7-1A11] WB, ELISA		

RNAi & Gene Silencing Antibodies

A-5104	DCP1A Monoclonal Antibody [2D12] WB, ELISA
A-5101	EIF2C2 Monoclonal Antibody [2E12-1C9] WB, ELISA, IHC, IF
A-5106	ELAVL1 Monoclonal Antibody [4G8] WB, ELISA, IHC, IF
A-5107	PRKRA Monoclonal Antibody [1B9-1A7] WB, ELISA, IHC
A-5108	SMG1 Monoclonal Antibody [1A8] WB, ELISA, IHC

Applications:
AFC = Affinity Chromatography; DB = Dot Blot; EMSA = Electrophoretic Mobility Shift Assays; FA = Functional Application;
FC = Flow Cytometry; GS = Gel Shift; ICC = Immunocytochemistry; IEM = Immuno-Electron Microscopy; IF = Immunofluorescence;
IH = Immunohistochemistry; IHC = Immunohistochemistry; IP = Immunoprecipitation; MeDIP = Methylated DNA Immunoprecipitation;
WB = Western Blot; v = ChIP-Grade Certified

蛋白生成以後接上泛素 (ubiquitin) 的過程即稱為泛素化作用 (Ubiquitination)。目前已知此作用會改變蛋白存在於細胞中的位置、影響蛋白活性及蛋白之間的交互作用。另外研究人員發現 sumoylation 會調控蛋白間的交互作用及 subcellular 目標定位等作用。同時也牽涉許多的生物機制過程。例如細胞核質運送 (nuclear-cytosolic transport)、細胞凋亡 (apoptosis)、轉錄調控 (transcriptional regulation)、壓力反饋 (response to stress)、蛋白穩定性 (protein stability) 以及細胞循環等。Ubiquitination 及 sumoylation 的抗體是研究人員研究多樣性核蛋白機制不可或缺的好工具。

RNA 干擾 (RNA interference, RNAi) 是透過 shRNA、siRNA 和 miRNA 等 RNA 分子來破壞 mRNA 及降低其蛋白表現的基因調控機制來達到基因靜默作用 (gene silencing)。RNAi 及 gene silencing 抗體可以用於研究多種牽涉與此機制的相關蛋白。

Cell Cycle & Apoptosis Antibodies

細胞循環相關抗體可用於辨識許多細胞循環中的蛋白·包含細胞間期 (interphase) 及有絲分裂 (mitotic phase) 等·例如組蛋白 H3 的 Ser28 位置會在DNA 複製 (DNA replication) 期間被進行修飾而從細胞循環階段脫離·在細胞凋亡 (Apoptosis) 或者編程性細胞死亡 (programmed cell death) 的時候也可以利用抗體來研究如 caspases 這類主要調控細胞凋亡的相關蛋白。

A-6198	FAS Monoclonal Antibody [1D6] WB, ELISA	A-0592	HSP90Alpha/Beta Monoclonal Antibody [H9010] ICC, IP, WB
A-6218	GAS2 Monoclonal Antibody [4E11] WB, ELISA, IF	A-0475	iNOS Polyclonal Antibody IP, WB
A-0800	B-actin Monoclonal Antibody [A2-F6] WB, IHC, ICC	A-0477	JNK2 Polyclonal Antibody ELISA, WB
A-6204	CIDEA Monoclonal Antibody [4B9] WB, ELISA, IP	A-0611	Netrin-1 Monoclonal Antibody [NORA1] ELISA, IHC, IP, WB
A-0574	Caspase-1 Monoclonal Antibody [4G8] ELISA, FC, WB	A-0471	NFkappaB p50 Polyclonal Antibody WB
A-0570	Caspase-11 Monoclonal Antibody [4E11] FC, WB	A-0496	NF-KappaB (p65) Polyclonal Antibody ICC, IP, WB
A-0556	Caspase-2 Monoclonal Antibody [11B4] IP, WB	A-0640	nNOS Polyclonal Antibody ELISA, ICC, IF, WB
A-0551	Cathepsin L/procathepsin L Monoclonal Antibody [CPLH 33/2] ELISA, IHC, WB	A-0476	PKA (CT) Polyclonal Antibody WB
A-0576	CCR3 Monoclonal Antibody [5E8] FC	A-0568	PTX3 Monoclonal Antibody [MNB4] ELISA, FC, IHC, IP, WB
A-0432	CDK1/CDC2 Monoclonal Antibody [POH1] IHC, WB	A-0575	RNase L Monoclonal Antibody [2E9] ELISA, WB, IP, ICC, IHC
A-0463	CHK2 Monoclonal Antibody [DCS270] IHC, IP, WB	A-6147	RP56KA2 Monoclonal Antibody [1F6] WB, ELISA, IHC, IF
A-0641	COX-2 Polyclonal Antibody IHC, IP, WB	A-0552	Toll-like receptor 2 Monoclonal Antibody [TL2.1] ELISA, FC, IHC, IP, WB
A-0465	Cyclin B1 Monoclonal Antibody [V63] IHC, WB	A-0569	Toll-like receptor 3 Monoclonal Antibody [TLR3.7] FC, ICC, IP, Functional Application
A-0010	Cyclin G1 Polyclonal Antibody WB, ELISA, IHC, IF, IP		
A-0011	Cyclin G2 Polyclonal Antibody WB, ELISA		
A-0425	EGF receptor Polyclonal Antibody (pTyr1068) WB		
A-0579	ERGIC-53 Monoclonal Antibody [G1/93] ELISA, FC, ICC, IHC, IP, WB		

Transcription Factor Antibodies

訊息轉錄因子 (Transcription factors) 為可調控基因表現的 DNA 結合蛋白·此蛋白有時含有一個以上的 DNA-binding domain 而且可以單獨形式或者形成同型或異型的二聚體來進行作用·訊息轉錄因子的結合靠著靜電力 (electrostatic) 及凡得瓦力 (van der waals forces) 來作用在許多不同基因附近的相似序列片段·訊息轉錄因子結合至 DNA 後可做為 activators 來促進 RNA polymerase 也可作為 repressors 來抑制 RNA polymerase·此外·訊息轉錄因子在部份情況下也可做為 coactivators 或者 corepressors·催化組蛋白的乙基化及去乙基化作用·在環境及生物刺激的驅使之下·訊息轉錄因子可以啟動一連串訊息傳遞流程來影響目標基因·某些訊息轉錄因子需要受質 (ligand) 的結合來幫助核轉位作用 (nuclear translocation) 及提升其與DNA 或 cofactor 的結合·在生物發育的情況下·特定的時間透過多種的外來刺激能有效地驅動各種

訊息轉錄因子來影響上下游的基因表現·進而有效正確地達到目標的生成及分化·訊息轉錄因子有時也扮演著致癌基因 (oncogenes) 或者腫瘤抑制因子 (tumor suppressors) 的角色來影響各種癌症生成·因此能做為研究人員治療各種疾病的標的·

Secondary Antibodies

A12000	Goat Anti-Mouse Secondary Antibody, Biotin Conjugated WB, IHC, IF, ELISA	A26005	GAPDH Monoclonal Tag Antibody [4G5] ELISA, FC, IH, IF, IP, WB
A12001	Goat Anti-Rabbit Secondary Antibody, Biotin Conjugated WB, IHC, IF, ELISA	A26006	Annexin V Monoclonal Tag Antibody [VAA-33] ELISA, FC
A12002	Goat Anti-Rat Secondary Antibody, Biotin Conjugated WB, IHC, IF, ELISA	A26007	GST Monoclonal Tag Antibody [3G10/1B3] WB, IP
A12003	HRP-Goat Anti-Mouse Secondary Antibody WB, IHC, IF, ELISA	A16001-1	Non-Immune Rabbit IgG Secondary Antibody ELISA, IP
A12004	HRP-Goat Anti-Rabbit Secondary Antibody WB, IHC, IF, ELISA	A16000-1	Non-Immune Mouse IgG Secondary Antibody ELISA, IP
A16000	Non-Immune Mouse IgG Secondary Antibody ELISA, IP	A12004-1	HRP-Goat Anti-Rabbit Secondary Antibody ELISA, IF, IHC, WB
A16001	Non-Immune Rabbit IgG Secondary Antibody ELISA, IP	A12003-1	HRP-Goat Anti-Mouse Secondary Antibody ELISA, IF, IHC, WB
A26000	Biotin Monoclonal Tag Antibody [B25] ELISA	A12002-1	Goat Anti-Rat Secondary Antibody, Biotin Conjugated ELISA, IF, IHC, WB
A26001	c-Myc Monoclonal Tag Antibody [9E10] ELISA, FC, IH	A12001-1	Goat Anti-Rabbit Secondary Antibody, Biotin Conjugated ELISA, IF, IHC, WB
A26003	FLAG Monoclonal Tag Antibody [6F7] ELISA, FC, IF, IH, IP, WB	A12000-1	Goat Anti-Mouse Secondary Antibody, Biotin Conjugated ELISA, IF, IHC, WB
A26004	HA-Tag Polyclonal Tag Antibody ELISA, IH, WB		

Tag Antibodies

A26404-1	His-Tag Polyclonal Tag Antibody, HRP Conjugated WB	A24007-1	IgG2b Isotype Control Monoclonal Antibody [MPC11], PE Conjugated FC
A26403-1	GST Polyclonal Tag Antibody, HRP Conjugated ELISA, WB	A24006-1	IgG2b Isotype Control Monoclonal Antibody [MPC11], FITC Conjugated FC
A26402-1	c-Myc Polyclonal Tag Antibody, HRP Conjugated WB	A24005-1	IgG2b Isotype Control Monoclonal Antibody [MPC11], DyLight 488 Conjugated FC
A26401-1	c-Myc Polyclonal Tag Antibody, FITC Conjugated ICC	A24004-1	IgG2a Isotype Control Monoclonal Antibody [C1.18], FITC Conjugated FC
A26400-1	GFP Monoclonal Tag Antibody [B2-F7], HRP Conjugated WB	A24003-1	IgG1 Isotype Control Monoclonal Antibody [MOPC21], PE Conjugated FC
A26007-1	GST Monoclonal Tag Antibody [3G10/1B3] IP, WB	A24002-1	IgG1 Isotype Control Monoclonal Antibody [MOPC21], FITC Conjugated FC
A26006-1	Annexin V Monoclonal Tag Antibody [VAA-33] ELISA, FC	A24001-1	IgG1 Isotype Control Monoclonal Antibody [MOPC21], DyLight 488 Conjugated FC
A26005-1	GAPDH Monoclonal Tag Antibody [4G5] ELISA, FC, IF, IH, IP, WB	A24000-1	Myc-Tag Monoclonal Antibody [PL14] ICC, IP, WB
A26004-1	HA-Tag Polyclonal Tag Antibody, KLH Conjugate ELISA, IH, WB		
A26003-1	FLAG Monoclonal Tag Antibody [6F7] ELISA, FC, IF, IH, IP, WB		
A26001-1	c-Myc Monoclonal Tag Antibody [9E10], KLH Conjugate ELISA, FC, IH		
A26000-1	Biotin Monoclonal Tag Antibody [B25] ELISA		

CRISPR/Cas Antibodies

A-9000	CRISPR Cas9 Monoclonal Antibody [7A9] WB, IP, IF, ELISA
--------	---

Applications:
AFC = Affinity Chromatography; DB = Dot Blot; EMSA = Electrophoretic Mobility Shift Assays; FA = Functional Application;
FC = Flow Cytometry; GS = Gel Shift; ICC = Immunocytochemistry; IEM = Immuno-Electron Microscopy; IF = Immunofluorescence;
IH = Immunohistology; IHC = Immunohistochemistry; IP = Immunoprecipitation; MeDIP = Methylated DNA Immunoprecipitation;
WB = Western Blot; v = ChiP-Grade Certified

· 更多抗體及完整資訊請至威健官網 shop.welgene.com.tw

一級抗體 (primary antibodies) 結合辨識特定的目標抗原·而二級抗體 (Secondary antibodies) 能結合至一級抗體 (primary antibodies) 上·藉此來進行多種應用·例如免疫染色 (immunostaining) 及訊號檢測等實驗·

分子標識抗體 (Tag antibodies) 設計用於辨識蛋白上的特定分子標識·若目標蛋白在沒有合適的辨識抗體情況下·可以選擇分子標識抗體來做為研究應用·

從細菌免疫系統發展而來的 DNA 編輯技術 CRISPR/Cas9 可配合 guide RNA (gRNA) 引導來針對目標序列進行裂解作用·使用 CRISPR/Cas9 抗體能針對最常用 Streptococcus pyogenes (S. pyogenes) CRISPR-associated endonuclease Cas9/Csn1 蛋白來進行辨識結合·做為實驗相關載體轉染及蛋白表現與否的確認·